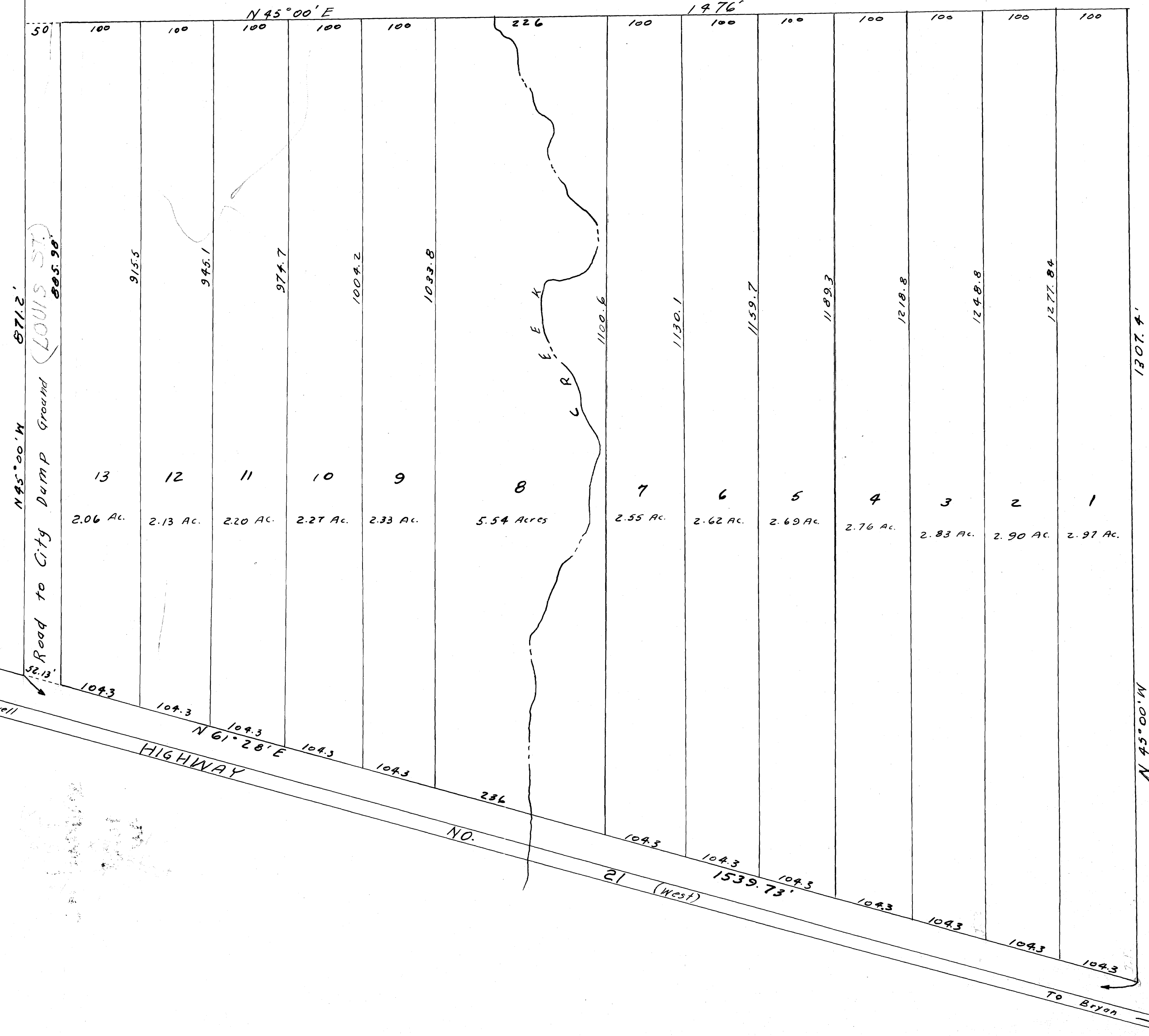


City Dump Ground
VOL 88
Page 7

on land base
9/19/2000
WD

A. Jahn Tract



PARK HEIGHTS ADDITION

A Subdivision of 35.85 Acres of Land in S.F.A. #9

D.R. 90 Page 456
Jan. 27, 1936

Scale: 1" = 100'

J.A. Boriskie

